



ABOUT

As the University of Michigan's gateway to entrepreneurship and innovation, Innovate Blue helps turn ideas into action by supporting, connecting, and expanding the Michigan entrepreneurial network and community.

With more than 15 centers and programs in entrepreneurship and more than 30 entrepreneurial student organizations, University of Michigan programs deliver one of the best and broadest engaged learning experiences on entrepreneurship.

Taken together, programs at the University of Michigan encourage innovation, creativity and an entrepreneurial spirit that spurs economic development and contributes to the public good

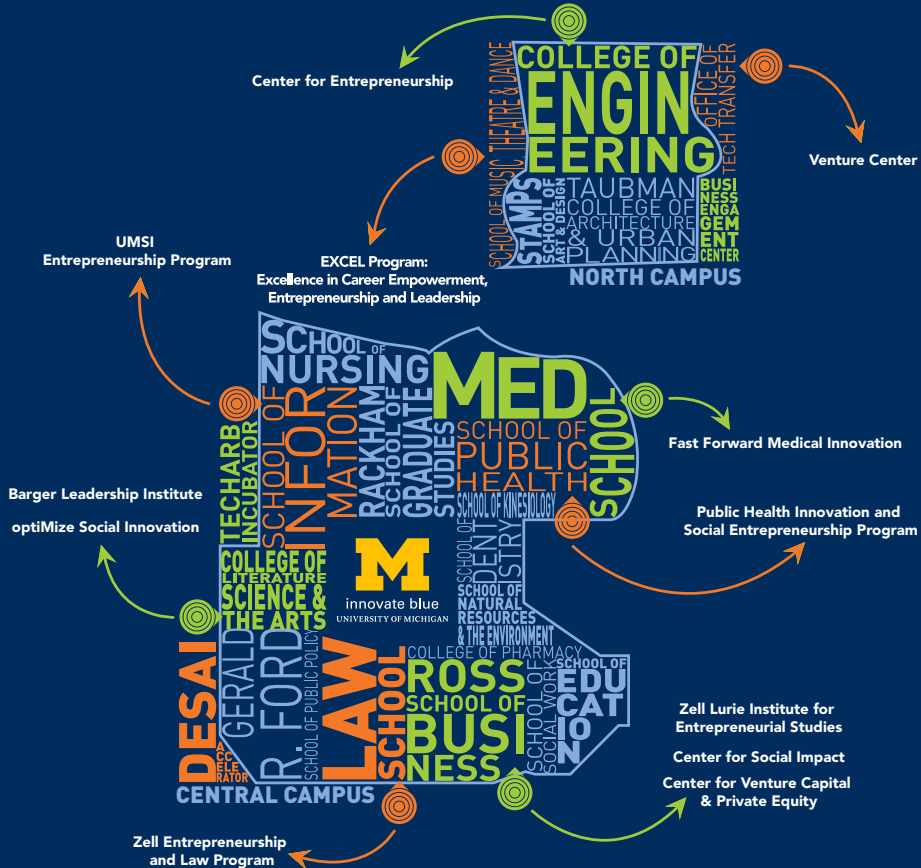
MISSION

We embrace entrepreneurship from all angles -- from engineering and research, to art and design, health and social development, and everything in between. Entrepreneurship programs extend to every discipline and connect a united community working together to address some of the world's biggest challenges.

Our engaged learning approach combines an educational foundation with opportunities for practice, so that students gain self-agency and the ability to innovate and take risks.

The result? Graduates well-equipped to collaborate across disciplines to solve some of the world's most complex problems, build new business, and create social ventures for the public good.

MAP OF INNOVATION AND ENTREPRENEURSHIP AT THE UNIVERSITY OF MICHIGAN



ACADEMIC PARTNERS

Barger Leadership Institute

Founded by University of Michigan alumni, the Institute supports innovative undergraduate education in the liberal arts and the goal of early, rigorous, and general leadership education.

Center for Entrepreneurship

The CFE provides active learning experiences to all students and faculty at The University through classes and programs that are designed to teach the skills needed to successfully translate high-potential projects and ideas into the world.

Center for Social Impact

The Center for Social Impact prepares and inspires leaders to tackle complex social challenges. Students in the Center's programs receive support and resources to start social ventures, and collaborate with mission-driven organizations across sectors to develop innovative solutions to pressing social challenges.

Campuswide Minor in Entrepreneurship

Innovate Blue partners with colleges across campus to administer a 15-credit minor in entrepreneurship that equips undergraduate students from any background or area of study with the necessary skills and experience to translate ideas into real

impact. Led by a cross-campus, multi-college and school curriculum committee, this highly immersive academic program gives students the skills to be effective leaders with the confidence to innovate, be entrepreneurial, and re-invent themselves through engaged learning coursework and practical experiences.

College of Literature, Science, and the Arts optiMize Program

Driven by students, the optiMize program is a unique partnership between the College of Literature, Science, and the Arts and the optiMize student organization that helps to turn ideas into impact through a six month program and seed fund \$100,000 to student teams every summer.

Desai Accelerator

The Desai Family Accelerator is a collaborative effort between the Zell Lurie Institute of Entrepreneurial Studies at the Ross School of Business and the Center for Entrepreneurship at the College of Engineering. The Accelerator is a program open to the national startup community, looking to help passionate entrepreneurs take their early-stage ventures to external-funding readiness by leveraging The University of Michigan's expansive network of people and resources.

School of Information Entrepreneurship Program

This program aims to inspire and support every UMSI student to do at least one passion-led, self-directed innovation project while in school. The curricular and extracurricular activities include annual Innovation Treks to major metropolitan areas, a Design Clinic in which student teams serve area entrepreneurial clients, and coursework in mobile application innovation. Students network, receive mentorship, and build entrepreneurial skills.

School of Music, Theatre and Dance

SMTD works to empower students to be entrepreneurial and engage in rewarding careers related to their field of study through the EXCEL Program (Excellence in Career Empowerment, Entrepreneurship & Leadership), which conflates the areas of career development and entrepreneurialism.

Public Health Innovation and Social Entrepreneurship Program

This 6-month program focuses on the creation, nurturing and sharing of ideas, approaches, concepts and prototypes which will help create dramatic improvements to the public's health. Students gain experience developing innovative ideas for solutions to meet current public health problems.

Innovate Blue Innovation Space

The Innovate Blue space on the first floor of the Shapiro Undergraduate library has entrepreneurial class advising, a reservable conference room, and open collaborative work and design space open 24 hours a day.

TechArb

Based near central campus in downtown Ann Arbor, the TechArb student startup accelerator empowers students to bring their ideas to life and build viable ventures in an intensive hands-on entrepreneurial education experience. It's sponsored by the Center for Entrepreneurship, the Zell Lurie Institute and Innovate Blue.

Zell Entrepreneurship and Law (ZEAL) Program

ZEAL offers Michigan Law students, the University, and the entrepreneurial and business community a variety of programs that build on the resources of one of the world's top-tier law schools.

Zell Lurie Institute for Entrepreneurial Studies

The globally recognized Samuel Zell & Robert H. Lurie Institute for Entrepreneurial Studies provides curriculum, program initiatives, community involvement, and alumni outreach activities that deliver exclusive resources for future entrepreneurs at the University of Michigan.

ENTREPRENEURIAL
COURSES OFFERED:

50

UNDERGRADUATE

60+

GRADUATE

MINOR IN ENTREPRENEURSHIP
PROGRAM IN ENTREPRENEURSHIP
GRADUATE PROGRAM



SPACE



FUNDS



PEOPLE

30+

ENTREPRENEURIAL
STUDENT
ORGANIZATIONS

COMPETITIONS



INTERNSHIPS



WORKSHOPS

○ ACADEMICS

● RESOURCES

EXPERIENCES

100+

ENTREPRENEURSHIP COURSES

OVER THE PAST
4 YEARS
10,000 STUDENTS ENROLLED IN
ENTREPRENEURSHIP & INNOVATION COURSES

ENTREPRENEURIAL EXTRACURRICULAR ACTIVITIES HAVE DRAWN
A COMBINED ATTENDANCE OF MORE THAN

40,000

ENTREPRENEURSHIP STUDENTS HAVE STARTED

300+

VENTURES
IN THE PAST YEAR

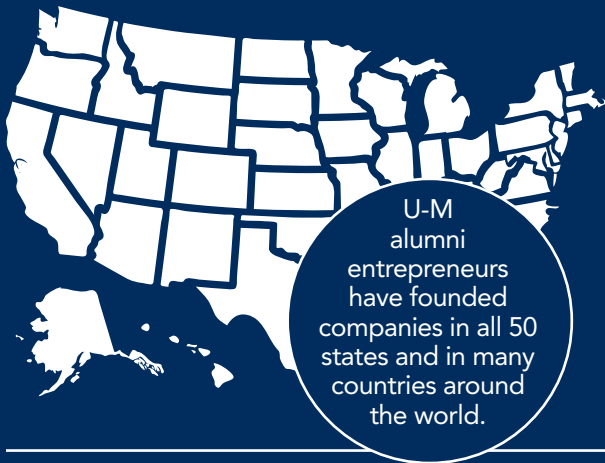
15

PROGRAMS
& CENTERS
ACROSS
CAMPUS

OF U-M'S **535,000**

**LIVING ALUMNI WORLDWIDE
20% ARE ENTREPRENEURS**

"ENTREPRENEURSHIP AND THE URC" BY THE ANDERSON ECONOMIC GROUP, LLC. 2013



U-M
alumni
entrepreneurs
have founded
companies in all 50
states and in many
countries around
the world.

**ALUMNI
ENTREPRENEURS
COME FROM ALL**

19

**OF OUR SCHOOLS
COLLEGES &**

Over the last ten years, the university has started up an average of one company every five weeks based on U-M-developed technology.

COMMERCIALIZATION PARTNERS

Business Engagement Center

The Business Engagement Center is the pathway connecting dynamic organizations with the remarkable talent and resources at the University of Michigan for mutually beneficial partnerships, exceptional experiences and opportunities to flourish. BEC links the world's brightest minds with the world's greatest companies, sparking innovation and change through collaboration on research projects, campus recruiting and philanthropic endeavors.

Center for Entrepreneurship I-Corps Program

The Center for Entrepreneurship is one of two original university nodes of the National Science Foundation-funded Innovation Corps Program. This program is designed to support faculty in translating research to the world by immersing them in an out-of-the-lab customer discovery course.

Center for Venture Capital and Private Equity Finance

The Center oversees the finance and investment component of entrepreneurial studies at the Stephen M. Ross School of Business at the University of Michigan and works to connect the School's entrepreneurial network to the financial community.

Fast Forward Medical Innovation

FFMI helps biomedical researchers navigate the commercialization process via education, mentoring, funding resources, and personal consultation services, with the ultimate goal of positively impacting patient health.

Office of Technology Transfer

Tech Transfer works to effectively transfer University of Michigan technologies to the market so as to generate benefits for the University, the community, and the general public.

COMMUNITY PARTNERS

Ann Arbor SPARK

SPARK is dedicated to the economic prosperity of the greater Ann Arbor region, by attracting, developing, strengthening, and investing in driving industries to help our region thrive.

Michigan Economic Development Corporation (MEDC)

The state of Michigan's marketing arm and lead advocate for business development, talent and jobs, tourism, film, and digital media incentives, arts and cultural grants, and overall economic growth.



innovate blue
UNIVERSITY OF MICHIGAN

Start up here:
innovateblue.umich.edu
[@innovateblue](https://twitter.com/innovateblue)